



GHANA STATISTICAL SERVICE (GSS)
Statistics for Development and Progress

Statistical Bulletin

(PRODUCER PRICE INDEX PPI)
October, 2020

Ghana Statistical Service (GSS)

Statistical Bulletin

PRODUCER PRICE INDEX (PPI)

October, 2020

Date: November 18, 2020

**Producer Price Index (PPI)
OCTOBER 2020**

CONTENTS

HIGHLIGHTS FOR OCTOBER 2020	2
Table 1: Producer Price Index for October 2019 - October 2020	4
Table 2: Producer Price Index (Sep.2006=100) by sectors for October 2019 - October 2020	5
Table 3: Producer Price Index: Yearly Change Rates by Sector for October 2019 - October 2020 (%)	6
Table 4: Producer Price Index: Monthly Change Rates by Sector for October 2019 - October 2020 (%)	7
Table 5: Mining And Quarrying: Producer Price Index (Sept 2006=100) October 2019 - October 2020	8
Table 6: Mining and Quarrying: Yearly Change Rates for October 2019 - October 2020 (%)	9
Table 7: Mining and Quarrying: Monthly Change Rates for October 2019 - October 2020 (%)	10
Table 8: Manufacturing Producer Price Index (Sept 2006=100) for October 2019 - October 2020	11
Table 9: Manufacturing: Yearly Change Rates for September 2019 - September 2020 (%)	17
Table 10: Manufacturing: Monthly Change Rates for October 2019 - October 2020 (%)	23
Table 11: Utilities: Producer Price Index (Sept 2006=100) for October 2019 - October 2020	28
Table 12: Utilities: Yearly Change Rates for October 2019 - October 2020 (%)	29
Table 13: Utilities: Monthly Change Rates for October 2019 - October 2020 (%)	30

HIGHLIGHTS FOR OCTOBER 2020

Producer Price Inflation Rate in October 2020 is 8.4%

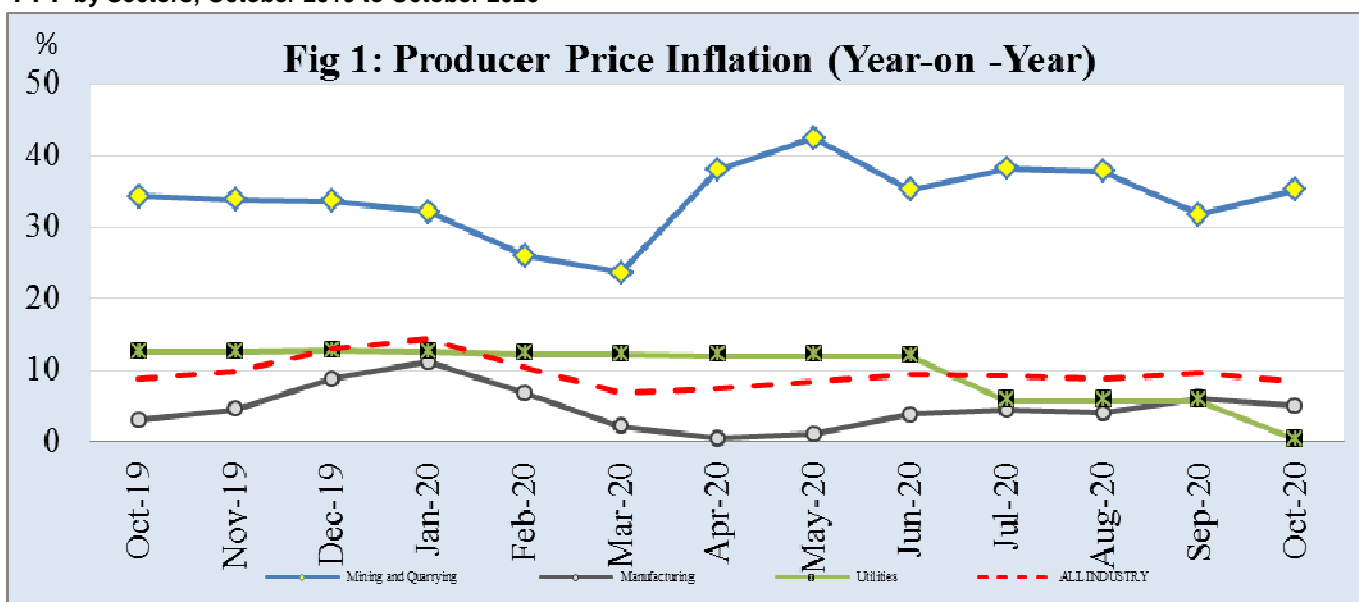
The Producer Price Index (PPI) measures the average change over time in the prices received by domestic producers for the production of their goods and services. The PPI for Ghana reports the producer price indices with reference to September 2006, the base period. This release shows the annual (year-on-year) and monthly producer inflation rates for all industry and three major sub-sectors of industry (Mining and Quarrying, Manufacturing and Utilities) for the last twelve months. The figures for the month of October 2020 are provisional, and are subject to revision when additional data become available. All other indicators are final.

The Producer Price Inflation rate for October 2020 was 8.4 percent. This rate indicates that between October 2019 and October 2020 (year-on-year), the PPI increased by 8.4 percent. This rate represents a 1.3 percentage point decrease in producer inflation relative to the rate recorded in September 2020 (9.7%). The month-on-month change in producer price index between September 2020 and October 2020 was 0.3 percent.

The producer price inflation in the Mining and Quarrying sub-sector increased by 3.5 percentage points over the September 2020 rate of 31.8 percent to record 35.3 percent in October 2020. The producer inflation for Manufacturing, which constitutes more than two-thirds of the total industry, decreased by 1.1 percentage points to record 5.1 percent. The utility sub-sector decreased by 5.4 percentage points over the September 2020 rate of 5.8 percent to record 0.4 percent.

During October 2020, eight out of the sixteen major groups in the manufacturing sub-sector recorded inflation rates higher than the sector average of 5.1 percent. Manufacture of rubber and plastic products recorded the highest inflation rate of 16.5 percent, while the Manufacture of coke, refined petroleum products, and nuclear fuel recorded the least inflation rate of -4.6 percent

PPI by Sectors; October 2019 to October 2020



Manufacture of coke, refined petroleum products etc: Annual rate was -4.6 percent for October 2020, as compare to -0.3 percent in September 2020.

Manufacture of other non-metallic mineral product: Annual rate was 11.1 percent for October 2020, as compared to 11.0 percent in September 2020.

Manufacture of food products and beverages: Annual rate was 9.5 percent in October 2020, as compared to 9.6 percent in September 2020.

Electricity and Water Supply: the inflation rate was 0.4 percent in October 2020, as compared to 6.0 percent in September 2020.

More detailed time series data is posted on the GSS website [www.statsghana.gov.gh].

The next release date is 16th December 2020

Table 1: Producer Price Index for October 2019 - October 2020

Year / Month	Index level	Monthly	Yearly
	Sept 2006=100	Change Rate (%)	
October-19	664.5	1.5	8.9
November-19	666.8	0.3	9.9
December-19	677.1	1.5	13.0
January-20	687.7	1.6	14.5
February-20	677.3	-1.5	10.5
March-20	663.1	-2.1	6.8
April-20	673.4	1.5	7.4
May-20	681.2	1.2	8.4
June-20	699.0	2.6	9.5
July-20	710.6	1.7	9.3
August-20	717.0	0.9	9.0
September-20	718.4	0.2	9.7
October-20	p 720.6	p 0.3	p 8.4

p: provisional

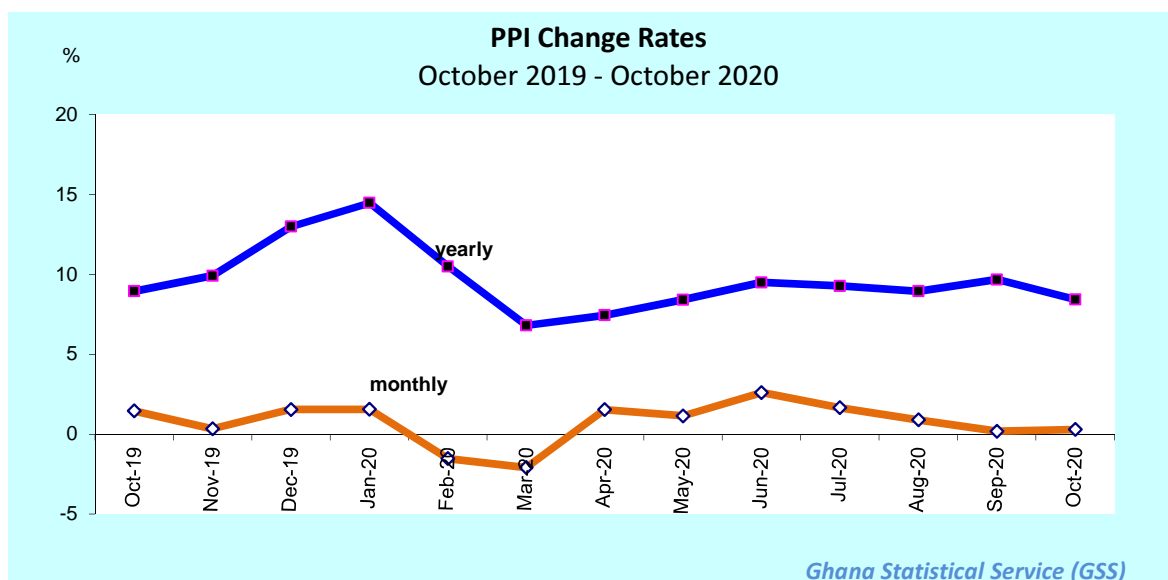


Table 2: Producer Price Index (Sep.2006=100) by sectors for October 2019 - October 2020

Year / Month	Mining and Quarrying	Manufacturing	Utilities	ALL INDUSTRY
<i>ISIC</i>	<i>C</i>	<i>D</i>	<i>E</i>	<i>C+D+E</i>
<i>weight</i>	13.97	69.75	16.28	100.00
October-2019	1,551.8	511.2	896.0	664.5
November-2019	1,552.0	513.7	896.5	666.8
December-2019	1,595.7	521.9	897.7	677.1
January-2020	1,649.9	530.0	897.2	687.7
February-2020	1,646.1	518.7	895.9	677.3
March-2020	1,641.1	503.2	896.2	663.1
April-2020	1,786.5	504.7	897.6	673.4
May-2020	1,847.3	509.3	898.3	681.2
June-2020	1,880.0	526.7	898.6	699.0
July-2020	2,014.6	531.2	898.8	710.6
August-2020	2,119.0	532.1	898.9	717.0
September-2020	2,063.5	536.8	898.9	718.4
October-2020	p 2,099.3	p 537.1	p 899.1	p 720.6

p: provisional

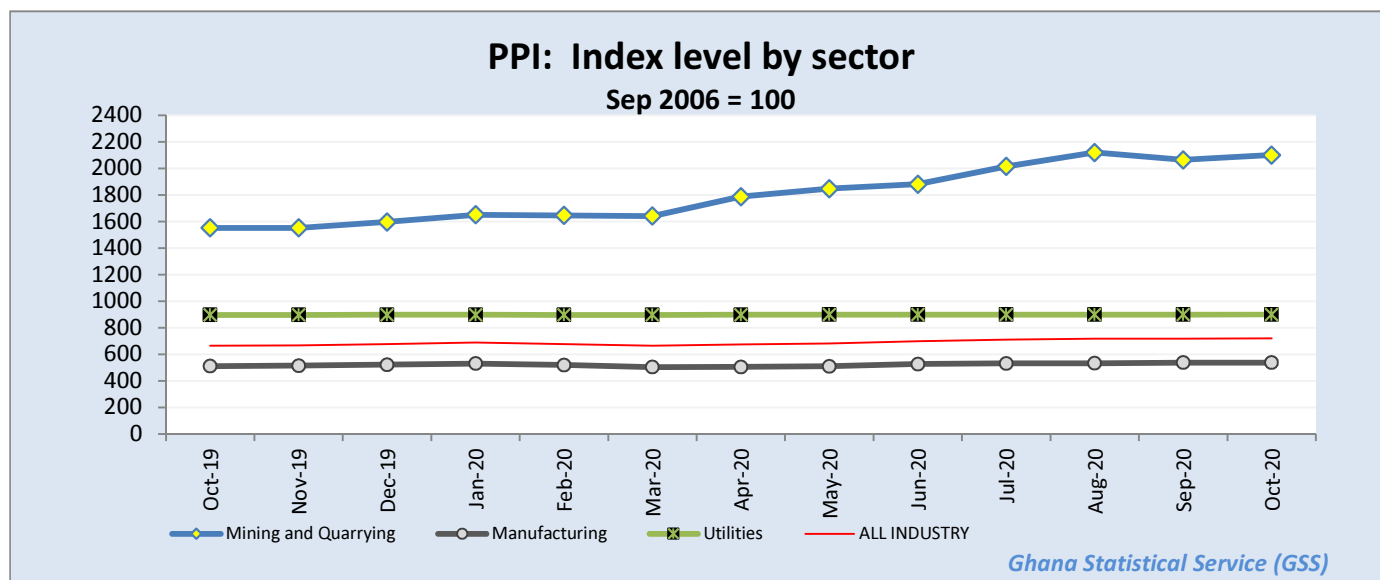


Table 3: Producer Price Index: Yearly Change Rates by Sector for October 2019 - October 2020 (%)

Year / Month	Mining and Quarrying	Manufacturing	Utilities	ALL INDUSTRY
ISIC	C	D	E	C+D+E
October-2019	34.4	3.1	12.6	8.9
November-2019	33.9	4.5	12.6	9.9
December-2019	33.7	8.8	12.7	13.0
January-2020	32.2	11.2	12.6	14.5
February-2020	26.1	6.8	12.3	10.5
March-2020	23.7	2.1	12.2	6.8
April-2020	38.0	0.5	12.1	7.4
May-2020	42.5	1.1	12.1	8.4
June-2020	35.2	3.8	12.0	9.5
July-2020	38.2	4.4	5.8	9.3
August-2020	37.9	4.0	5.8	9.0
September-2020	31.8	6.1	5.8	9.7
October-2020	p 35.3	p 5.1	p 0.3	p 8.4

p: provisional

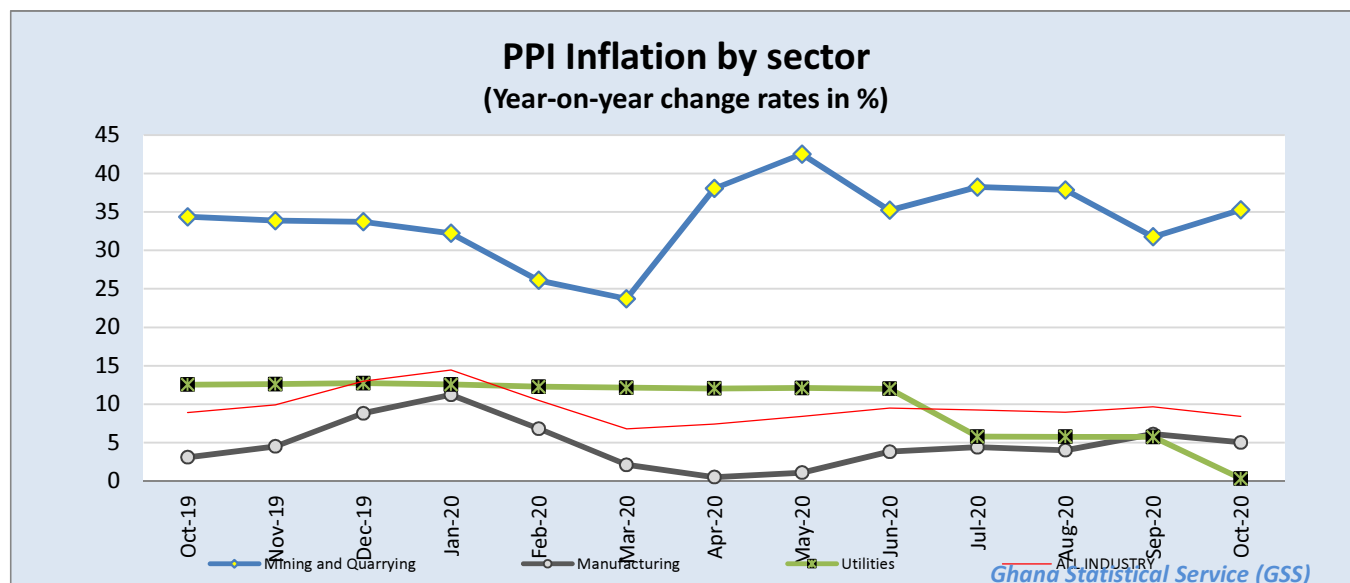


Table 4: Producer Price Index: Monthly Change Rates by Sector for October 2019 - October 2020 (%)

Year / Month	Mining and Quarrying	Manufacturing	Utilities	ALL INDUSTRY
<i>ISIC</i>	<i>C</i>	<i>D</i>	<i>E</i>	<i>C+D+E</i>
<i>weight</i>	13.97	69.75	16.28	100.00
October-2019	-0.9	1.1	5.4	1.5
November-2019	0.0	0.5	0.1	0.3
December-2019	2.8	1.6	0.1	1.5
January-2020	3.4	1.5	-0.1	1.6
February-2020	-0.2	-2.1	-0.1	-1.5
March-2020	-0.3	-3.0	0.0	-2.1
April-2020	8.9	0.3	0.1	1.5
May-2020	3.4	0.9	0.1	1.2
June-2020	1.8	3.4	0.0	2.6
July-2020	7.2	0.8	0.0	1.7
August-2020	5.2	0.2	0.0	0.9
September-2020	-2.6	0.9	0.0	0.2
October-2020	p 1.7	p 0.1	p 0.0	p 0.3

p: provisional

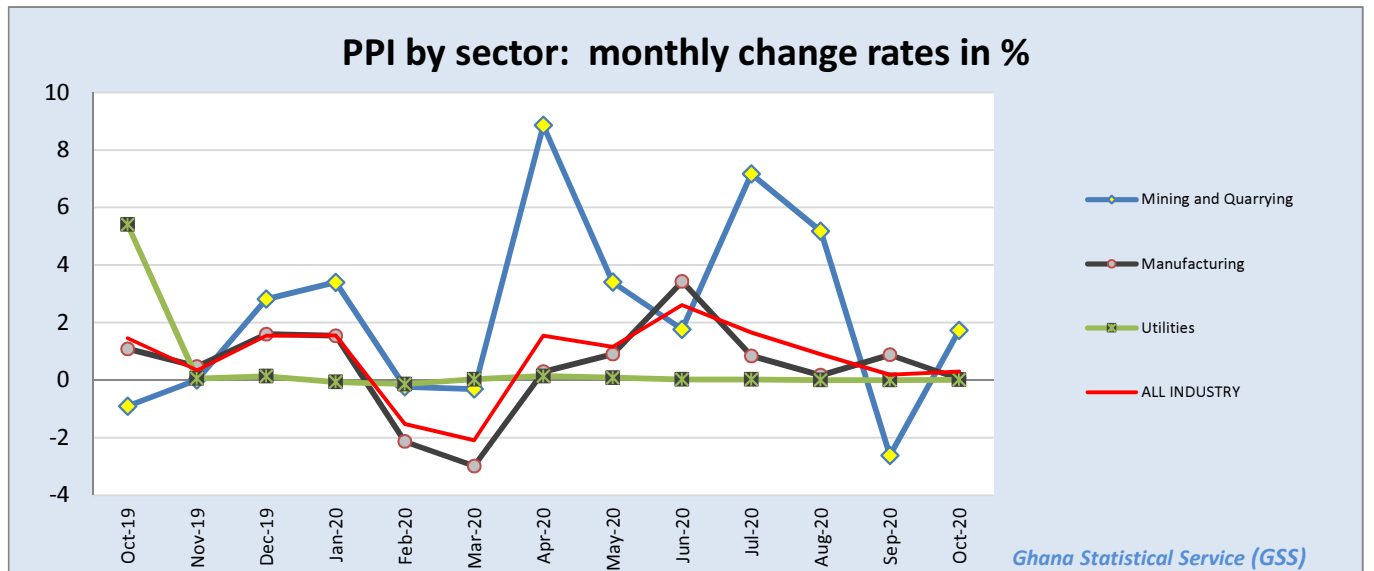


Table 5: Mining And Quarrying: Producer Price Index (Sept 2006=100) October 2019 - October 2020

Year / Month	Mining and Quarrying	Mining of metal ores	Mining of non-ferrous metal ores	Other mining and quarrying	Quarrying of stone, sand & clay	Mining and quarrying n.e.c.
ISIC	C	C13	C132	C14	C141	C142
October-2019	1551.8	1676.4	1676.4	226.9	183.8	519.3
November-2019	1552.0	1676.4	1676.4	227.5	184.4	519.3
December-2019	1595.7	1725.5	1725.5	227.5	184.4	519.3
January-2020	1649.9	1786.6	1786.6	227.5	184.4	519.3
February-2020	1646.1	1782.3	1782.3	227.5	184.4	519.3
March-2020	1641.1	1776.6	1776.6	227.5	184.4	519.3
April-2020	1786.5	1940.6	1940.6	227.5	184.4	519.3
May-2020	1847.3	2009.4	2009.4	227.5	184.4	519.3
June-2020	1880.0	2046.4	2046.4	227.5	184.4	519.3
July-2020	2014.6	2199.0	2199.0	227.5	184.4	519.3
August-2020	2119.0	2317.7	2317.7	227.5	184.4	519.3
September-2020	2063.5	2254.6	2254.6	227.5	184.4	519.3
October-2020	p 2099.3	p 2295.2	p 2295.2	p 227.5	p 184.4	p 519.3

p: provisional

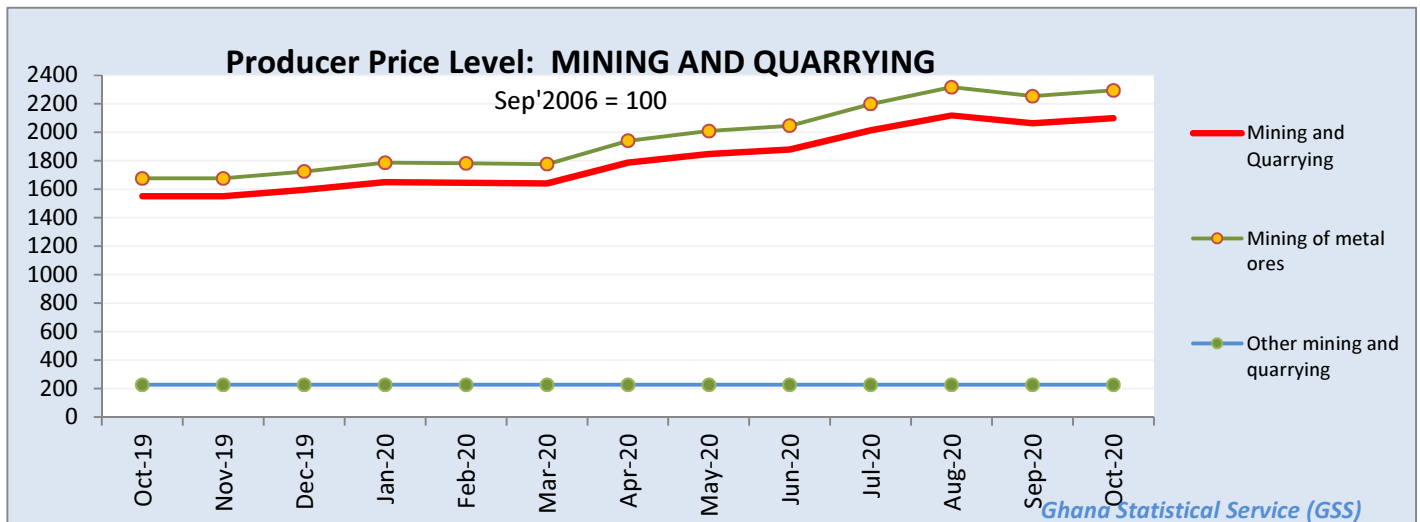


Table 6: Mining and Quarrying: Yearly Change Rates for October 2019 - October 2020 (%)

Year / Month	Mining and Quarrying	Mining of metal ores	Mining of non-ferrous metal ores	Other mining and quarrying	Quarrying of stone, sand & clay	Mining and quarrying n.e.c.
ISIC	C	C13	C132	C14	C141	C142
October-2019	34.4	35.9	35.9	1.0	0.0	4.9
November-2019	33.9	35.4	35.4	1.2	0.3	4.9
December-2019	33.7	35.3	35.3	0.2	0.3	0.0
January-2020	32.2	33.7	33.7	0.2	0.3	0.0
February-2020	26.1	27.3	27.3	0.2	0.3	0.0
March-2020	23.7	24.8	24.8	0.2	0.3	0.0
April-2020	38.0	39.8	39.8	0.2	0.3	0.0
May-2020	42.5	44.5	44.5	0.2	0.3	0.0
June-2020	35.2	36.9	36.9	0.2	0.3	0.0
July-2020	38.2	40.0	40.0	0.2	0.3	0.0
August-2020	37.9	39.6	39.6	0.2	0.3	0.0
September-2020	31.8	33.2	33.2	0.2	0.3	0.0
October-2020	p 35.3	p 36.9	p 36.9	p 0.2	p 0.3	p 0.0

p: provisional

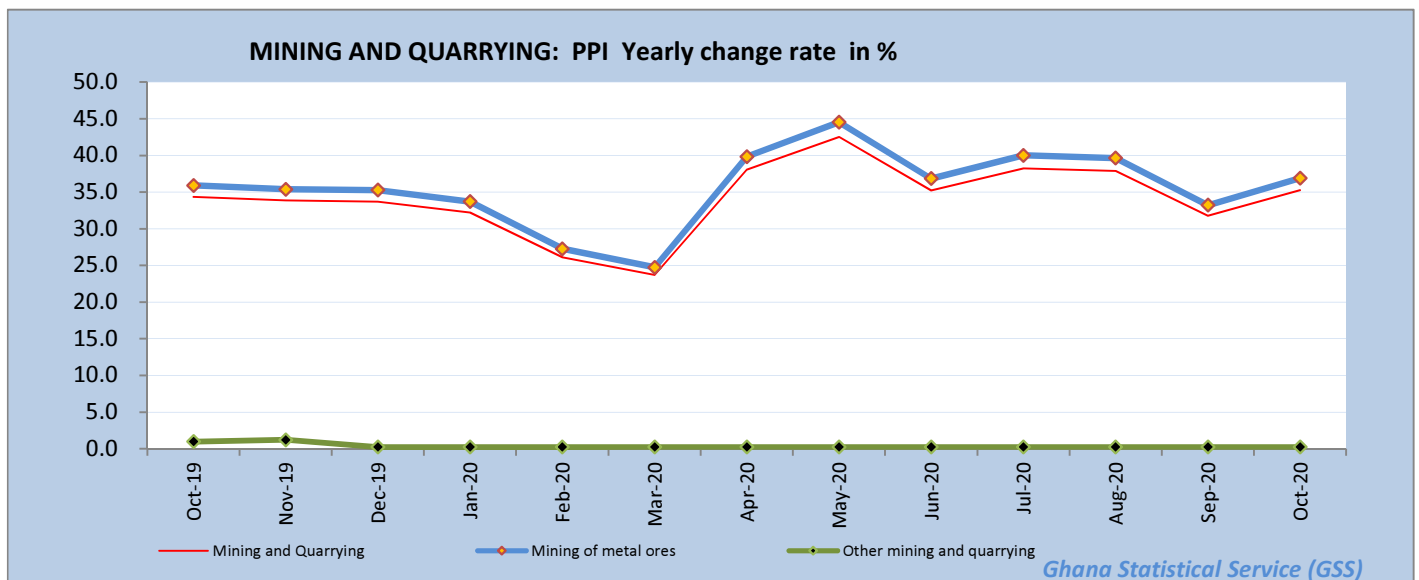


Table 7: Mining and Quarrying: Monthly Change Rates for October 2019 - October 2020 (%)

Year / Month	Mining and Quarrying	Mining of metal ores	Mining of non-ferrous metal ores	Other mining and quarrying	Quarrying of stone, sand & clay	Mining and quarrying n.e.c.
ISIC	C	C13	C132	C14	C141	C142
October-2019	-0.9	-0.9	-0.9	0.0	0.0	0.0
November-2019	0.0	0.0	0.0	0.2	0.3	0.0
December-2019	2.8	2.9	2.9	0.0	0.0	0.0
January-2020	3.4	3.5	3.5	0.0	0.0	0.0
February-2020	-0.2	-0.2	-0.2	0.0	0.0	0.0
March-2020	-0.3	-0.3	-0.3	0.0	0.0	0.0
April-2020	8.9	9.2	9.2	0.0	0.0	0.0
May-2020	3.4	3.5	3.5	0.0	0.0	0.0
June-2020	1.8	1.8	1.8	0.0	0.0	0.0
July-2020	7.2	7.5	7.5	0.0	0.0	0.0
August-2020	5.2	5.4	5.4	0.0	0.0	0.0
September-2020	-2.6	-2.7	-2.7	0.0	0.0	0.0
October-2020	p 1.7	p 1.8	p 1.8	p 0.0	p 0.0	p 0.0

p: provisional

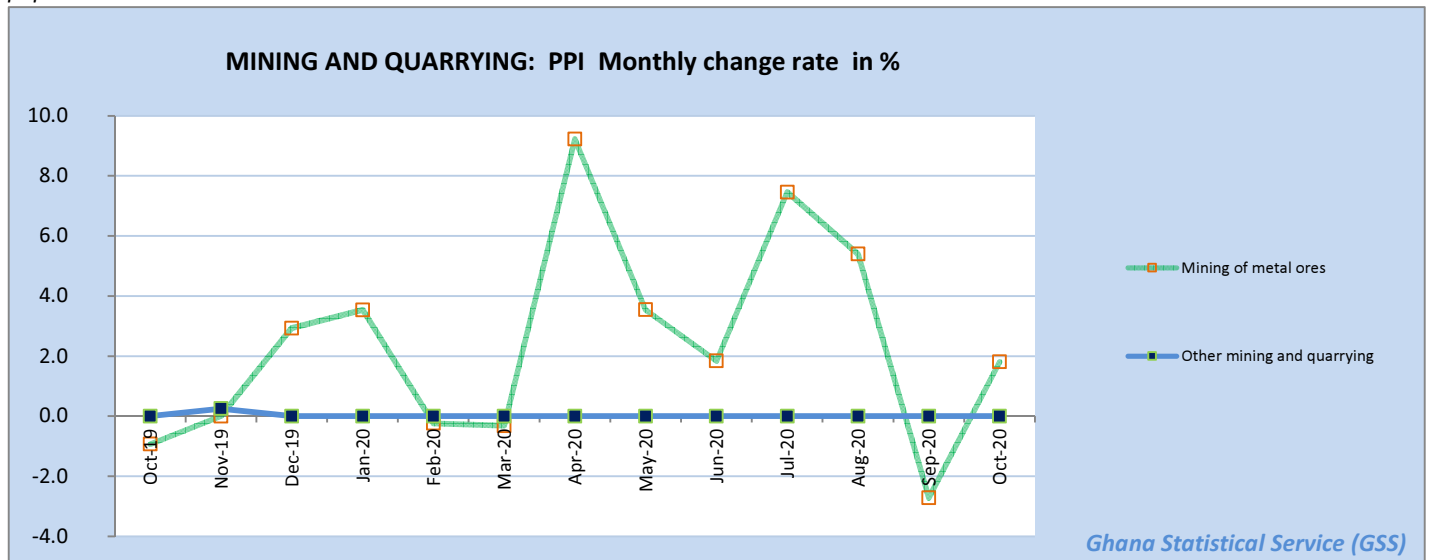


Table 8: Manufacturing Producer Price Index (Sept 2006=100) for October 2019 - October 2020

Year / Month	Manufacturing	Manufacture of food products and beverages	Production, processing, preservation of meat, fish, fruit, vegetables, oils and fats	Manufacture of dairy products	Manufacture of grain mill products, starch products, and prepared animal feeds	Manufacture of other food products	Manufacture of beverages	Manufacture of textiles	Spinning, weaving and finishing of textiles
ISIC	D	D15	D151	D152	D153	D154	D155	D17	D171
weight	100	25.64	4.60	4.31	4.66	4.80	7.27	4.27	4.28
October-2019	511.2	470.0	671.7	387.6	578.1	596.8	375.2	617.5	617.5
November-2019	513.7	474.5	711.1	387.6	580.3	598.8	375.2	618.0	618.0
December-2019	521.9	505.9	766.4	460.8	580.3	609.1	375.2	619.2	619.2
January-2020	530.0	506.4	774.0	460.8	580.3	606.9	375.2	618.5	618.5
February-2020	518.7	501.2	726.8	460.8	580.3	602.4	375.2	617.1	617.1
March-2020	503.2	502.3	736.5	460.8	580.3	603.5	375.2	617.7	617.7
April-2020	504.7	505.1	759.7	460.8	580.3	608.4	375.2	620.1	620.1
May-2020	509.3	509.9	773.4	460.8	580.3	611.3	383.9	621.6	621.6
June-2020	526.7	506.8	736.9	460.8	584.0	612.2	383.9	627.6	627.6
July-2020	531.2	509.3	755.2	460.8	584.0	613.1	385.2	655.1	655.1
August-2020	532.1	510.3	762.6	460.8	584.0	616.6	385.2	656.4	656.4
September-2020	536.8	514.4	803.3	460.8	584.0	616.7	385.2	656.5	656.5
October-2020	p 537.1	p 514.7	p 805.8	p 460.8	p 584.0	p 617.2	p 385.2	p 656.5	p 656.5

p: provisional

Table 8: Manufacturing Producer Price Index (Sept 2006=100) for October 2019 - October 2020
contd.

Year / Month	Tanning of leather; manu facture of luggage, etc	Manufacture of footwear	Manufacture of wood an of articles of straw etc.	Sawmilling and planing of wood	Manufacture of products of wood, cork, straw etc.	Manufacture of paper and paper products	Manufacture of paper and paper products	Publishing, printing and reproduction of rec. media	Publishing	Printing and service activities ...
ISIC	D19	D192	D20	D201	D202	D21	D210	D22	D221	D222
weight	0.12	0.12	9.03	4.94	4.10	0.62	0.62	1.14	0.40	0.74
October-2019	533.9	533.9	355.1	376.2	301.8	562.3	562.3	794.0	665.2	874.5
November-2019	544.9	544.9	357.4	376.2	309.3	563.0	563.0	794.0	665.2	874.5
December-2019	544.9	544.9	357.6	376.2	309.8	564.5	564.5	794.0	665.2	874.5
January-2020	544.9	544.9	357.5	376.2	309.5	563.5	563.5	794.0	665.2	874.5
February-2020	546.3	546.3	357.3	376.2	308.8	562.0	562.0	794.0	665.2	874.5
March-2020	546.3	546.3	357.4	376.2	309.1	562.4	562.4	794.0	665.2	874.5
April-2020	546.3	546.3	357.3	376.2	309.0	564.0	564.0	794.0	665.2	874.5
May-2020	550.2	550.2	365.5	384.0	317.8	566.4	566.4	794.0	665.2	874.5
June-2020	550.2	550.2	365.7	384.0	318.5	566.7	566.7	794.0	665.2	874.5
July-2020	550.2	550.2	365.8	384.0	318.9	567.0	567.0	794.0	665.2	874.5
August-2020	550.2	550.2	365.9	384.0	318.9	567.1	567.1	794.0	665.2	874.5
September-2020	563.8	563.8	369.8	384.0	332.4	567.1	567.1	847.9	665.2	967.9
October-2020	p 563.8	p 563.8	p 369.8	p 384.0	p 332.2	p 588.0	p 588.0	p 847.9	p 665.2	p 967.9

p: provisional

Table 8: Manufacturing Producer Price Index (Sept 2006=100) for October 2019 - October 2020

contd.

Year / Month	Manufacture of coke, refined petroleum products etc.	Manufacture of refined petroleum products	Manufacture of chemicals and chemical products	Manufacture of basic chemicals	Manufacture of other chemical products	Manufacture of man-made fibres	Manufacture of rubber and plastics products	Manufacture of rubber products	Manufacture of plastics products
ISIC	D23	D232	D24	D241	D242	D243	D25	D251	D252
weight	22.94	22.94	10.15	0.54	9.45	0.16	3.90	0.76	3.14
October-2019	537.5	537.5	490.5	434.0	502.4	128.8	440.1	338.1	465.5
November-2019	540.0	540.0	490.5	436.8	502.4	128.8	440.1	337.3	465.7
December-2019	534.5	534.5	490.6	442.9	502.4	128.8	441.7	342.6	466.3
January-2020	569.7	569.7	490.6	440.0	502.4	128.8	441.0	340.1	466.0
February-2020	527.5	527.5	490.5	433.9	502.4	128.8	439.3	334.9	465.5
March-2020	461.1	461.1	490.5	435.4	502.4	128.8	440.4	339.1	465.6
April-2020	462.4	462.4	490.6	442.0	502.4	128.8	442.1	344.8	466.2
May-2020	463.0	463.0	490.7	445.8	502.4	128.8	443.2	348.1	466.5
June-2020	512.5	512.5	490.7	447.1	502.4	128.8	469.8	349.3	500.4
July-2020	512.7	512.7	492.2	448.3	503.9	128.8	512.1	350.3	555.2
August-2020	512.8	512.8	492.2	448.7	503.9	128.8	512.2	350.6	555.3
September-2020	512.8	512.8	515.3	448.9	528.3	128.8	512.3	350.8	555.3
October-2020	p 512.9	p 512.9	p 515.3	p 449.6	p 528.3	p 128.8	p 512.5	p 351.4	p 555.4

p: provisional

Table 8: Manufacturing Producer Price Index (Sept 2006=100) for October 2019 - October 2020

contd.

Year / Month	Manufacture of other non-metallic min. products	Manufacture of non-metallic mineral products n.e.c.	Manufacture of basic metals	Manufacture of basic iron and steel	Manufacture of basic precious and non-ferrous metals	Manufacture of fabricated metal products, ...	Manufacture of structural metal products, tanks, reservoirs ...	Manufacture of other fabricated metal products ...	Manufacture of machinery ... n.e.c.	Manufacture of special-purpose machinery
<i>ISIC</i>	D26	D269	D27	D271	D272	D28	D281	D289	D29	D292
<i>weight</i>	8.20	8.20	5.02	2.02	2.65	3.70	1.55	2.15	0.42	0.42
October-2019	547.5	547.5	526.1	598.4	477.0	727.9	556.0	883.1	1328.8	1328.8
November-2019	547.9	547.9	527.6	598.8	479.2	737.4	572.0	886.4	1328.8	1328.8
December-2019	548.8	548.8	530.9	599.7	483.9	737.5	572.0	886.6	1328.8	1328.8
January-2020	548.4	548.4	529.5	599.6	481.7	740.2	572.0	890.6	1328.8	1328.8
February-2020	547.5	547.5	526.2	598.7	476.9	740.1	572.0	890.4	1328.8	1328.8
March-2020	548.2	548.2	527.2	599.4	478.1	740.2	572.0	890.5	1328.8	1328.8
April-2020	548.3	548.3	530.8	600.4	483.2	741.5	572.0	893.3	1328.8	1328.8
May-2020	561.4	561.4	532.9	601.0	486.2	743.1	573.5	895.0	1328.8	1328.8
June-2020	603.4	603.4	533.6	601.1	487.2	743.4	573.5	895.6	1328.8	1328.8
July-2020	607.5	607.5	538.2	601.3	494.7	743.7	573.5	896.1	1328.8	1328.8
August-2020	607.6	607.6	547.8	625.8	495.0	747.9	573.5	904.8	1328.8	1328.8
September-2020	608.4	608.4	548.1	626.4	495.1	754.7	581.3	910.2	1328.8	1328.8
October-2020	p 608.5	p 608.5	p 548.5	p 626.5	p 495.6	p 754.9	p 581.3	p 910.5	p 1328.8	p 1328.8

p: provisional

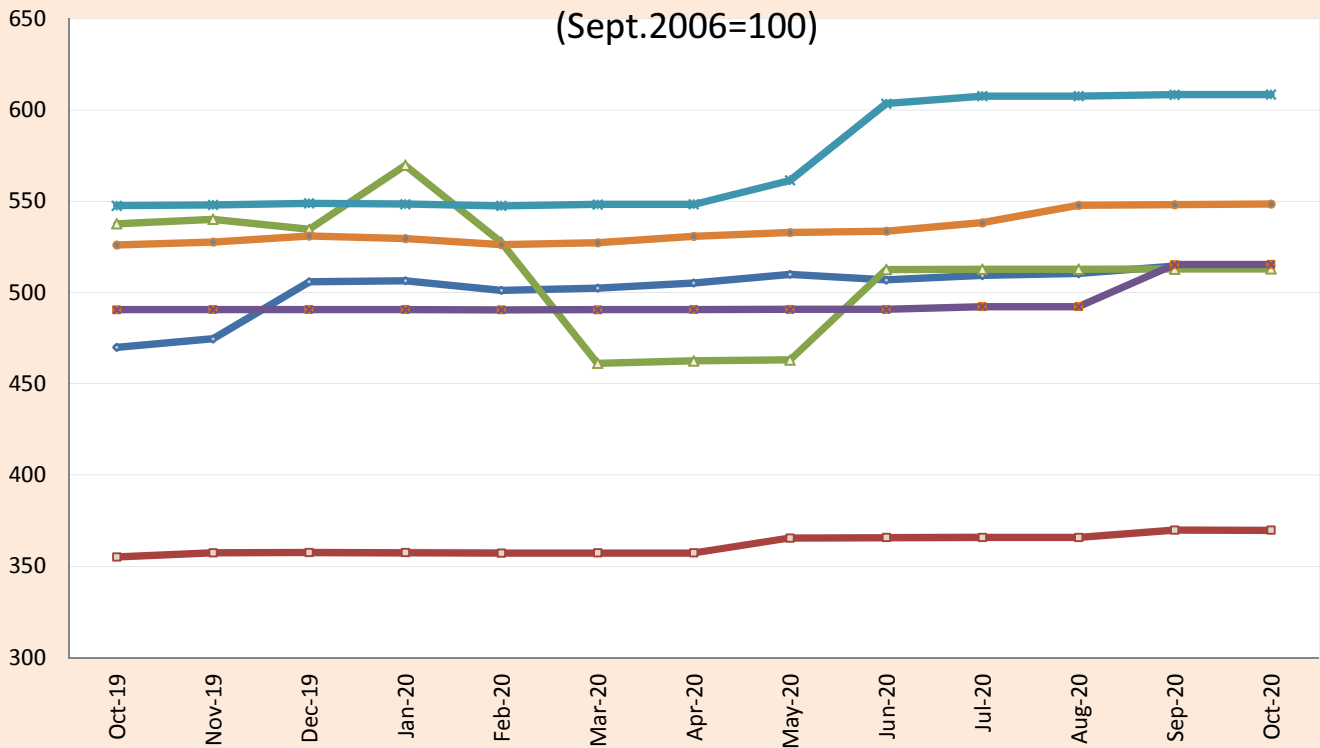
Table 8: Manufacturing Producer Price Index (Sept 2006=100) for October 2019 - October 2020

contd.

Year / Month	Manufacture of electrical machinery and apparatus n.e.c.	Manufacture of insulated wire and cable	Manufacture of motor vehicles, trailers and semi-trailers	Manufacture of bodies for motor vehicles, trailers and semi-trailers	Manufacture of furniture; manufacturing n.e.c.	Manufacture of furniture	Manufacturing n.e.c.
ISIC	D31	D313	D34	D342	D36	D361	D369
weight	0.41	0.41	0.05	0.05	2.44	2.33	0.11
October-2019	387.5	387.5	574.6	574.6	727.4	724.9	818.1
November-2019	387.5	387.5	581.8	581.8	727.4	724.9	818.1
December-2019	399.2	399.2	601.7	601.7	727.4	724.9	818.1
January-2020	399.2	399.2	591.0	591.0	737.7	735.4	818.1
February-2020	399.1	399.1	575.1	575.1	737.7	735.4	818.1
March-2020	399.1	399.1	586.0	586.0	737.7	735.4	818.1
April-2020	399.2	399.2	581.0	581.0	737.7	735.4	818.1
May-2020	399.3	399.3	606.2	606.2	776.2	774.9	823.0
June-2020	399.3	399.3	627.0	627.0	776.2	774.9	823.0
July-2020	399.3	399.3	641.5	641.5	779.4	778.1	823.0
August-2020	399.3	399.3	663.7	663.7	779.4	778.1	823.0
September-2020	399.3	399.3	666.2	666.2	783.1	779.7	908.6
October-2020	p 399.3	p 399.3	p 662.4	p 662.4	p 783.4	p 778.1	p 988.6

p: provisional

PPI for Selected Subgroups in the Manufacturing Sector (Sept.2006=100)



Ghana Statistical Service (GSS)

Table 9: Manufacturing: Yearly Change Rates for September 2019 - September 2020 (%)

Year / Month	Manufacturing	Manufacture of food products and beverages	Production, processing, preservation of meat, fish, fruit, vegetables, oils and fats	Manufacture of dairy products	Manufacture of grain mill products, starch products, and prepared animal feeds	Manufacture of other food products	Manufacture of beverages	Manufacture of textiles	Spinning, weaving and finishing of textiles
<i>ISIC</i>	D	D15	<i>D151</i>	<i>D152</i>	<i>D153</i>	<i>D154</i>	<i>D155</i>	D17	<i>D171</i>
<i>weight</i>	100	25.64	4.60	4.31	4.66	4.80	7.27	4.27	4.28
October-2019	3.1	6.1	8.5	8.5	6.4	4.4	2.8	3.0	3.0
November-2019	4.5	7.2	15.6	8.5	6.8	4.7	2.8	3.1	3.1
December-2019	8.8	14.7	27.6	29.0	6.8	6.5	2.8	3.2	3.2
January-2020	11.2	13.6	21.3	29.0	6.8	4.8	2.8	3.0	3.0
February-2020	6.8	10.9	11.3	29.0	0.4	3.8	2.8	0.2	0.2
March-2020	2.1	8.2	10.9	18.9	0.4	3.8	2.8	0.1	0.1
April-2020	0.5	9.5	19.2	18.9	0.4	4.7	2.8	0.6	0.6
May-2020	1.1	9.6	20.5	18.9	0.4	5.2	2.3	0.8	0.8
June-2020	3.8	8.5	13.6	18.9	1.0	3.1	2.3	1.6	1.6
July-2020	4.4	9.0	16.5	18.9	1.0	3.2	2.7	6.1	6.1
August-2020	4.0	9.1	16.7	18.9	1.0	3.7	2.7	6.3	6.3
September-2020	6.1	9.6	20.3	18.9	1.0	3.5	2.7	6.3	6.3
October-2020	p 5.1	p 9.5	p 19.9	p 18.9	p 1.0	p 3.4	p 2.7	p 6.3	p 6.3

p: provisional

Table 9: Manufacturing: Yearly Change Rates for September 2019 - September 2020 (%)

contd.

Year / Month	Tanning of leather; manufacture of luggage, etc	Manufacture of footwear	Manufacture of wood and of articles of straw etc.	Sawmilling and planing of wood	Manufacture of products of wood, cork, straw etc.	Manufacture of paper and paper products	Manufacture of paper and paper products	Publishing, printing and reproduction of rec. media	Publishing	Printing and service activities ...
<i>ISIC</i>	D19	<i>D192</i>	D20	<i>D201</i>	<i>D202</i>	D21	<i>D210</i>	D22	<i>D221</i>	<i>D222</i>
<i>weight</i>	0.12	<i>0.12</i>	9.03	<i>4.94</i>	<i>4.10</i>	0.62	<i>0.62</i>	1.14	<i>0.40</i>	<i>0.74</i>
October-2019	0.0	0.0	0.1	0.0	0.4	4.3	4.3	1.7	0.0	2.7
November-2019	2.1	2.1	0.8	0.0	3.0	4.4	4.4	1.7	0.0	2.7
December-2019	2.1	2.1	0.8	0.0	3.1	4.7	4.7	1.7	0.0	2.7
January-2020	2.1	2.1	0.8	0.0	2.9	4.3	4.3	1.7	0.0	2.7
February-2020	2.3	2.3	0.7	0.0	2.6	3.8	3.8	1.7	0.0	2.7
March-2020	2.3	2.3	0.7	0.0	2.5	3.5	3.5	1.7	0.0	2.7
April-2020	2.3	2.3	0.7	0.0	2.6	5.7	5.7	1.5	0.0	2.4
May-2020	3.1	3.1	3.0	2.1	5.5	1.5	1.5	1.5	0.0	2.4
June-2020	3.1	3.1	3.0	2.1	5.6	5.9	5.9	0.0	0.0	0.0
July-2020	3.1	3.1	3.0	2.1	5.7	1.0	1.0	0.0	0.0	0.0
August-2020	3.1	3.1	3.0	2.1	5.8	0.9	0.9	0.0	0.0	0.0
September-2020	5.6	5.6	4.1	2.1	10.2	0.9	0.9	6.8	0.0	10.7
October-2020	p 5.6	p 5.6	p 4.1	p 2.1	p 10.1	p 4.6	p 4.6	p 6.8	p 0.0	p 10.7

p: provisional

Table 9: Manufacturing: Yearly Change Rates for September 2019 - September 2020 (%)

contd.

Year / Month	Manufacture of coke, refined petroleum products etc.	Manufacture of refined petroleum products	Manufacture of chemicals and chemical products	Manufacture of basic chemicals	Manufacture of other chemical products	Manufacture of man-made fibres	Manufacture of rubber and plastic products	Manufacture of rubber products	Manufacture of plastics products
ISIC	D23	D232	D24	D241	D242	D243	D25	D251	D252
weight	22.94	22.94	10.15	0.54	9.45	0.16	3.90	0.76	3.14
October-2019	-5.7	-5.7	5.7	5.5	5.8	0.0	3.7	6.1	3.2
November-2019	-1.7	-1.7	5.7	6.2	5.8	0.0	3.7	5.9	3.3
December-2019	8.2	8.2	5.7	7.4	5.8	0.0	1.9	7.2	0.8
January-2020	20.6	20.6	5.7	5.8	5.8	0.0	1.5	5.5	0.7
February-2020	6.1	6.1	5.1	3.0	5.2	0.0	0.8	2.4	0.4
March-2020	-9.6	-9.6	4.5	1.7	4.6	0.0	0.4	1.9	0.1
April-2020	-15.3	-15.3	1.2	4.2	1.2	0.0	1.1	4.6	0.3
May-2020	-15.4	-15.4	1.2	4.9	1.2	0.0	1.3	5.4	0.4
June-2020	-4.5	-4.5	1.2	3.8	1.2	0.0	7.0	4.2	7.6
July-2020	-4.0	-4.0	0.3	4.0	0.3	0.0	16.6	4.4	19.3
August-2020	-5.4	-5.4	0.3	3.9	0.3	0.0	16.5	4.3	19.3
September-2020	-0.3	-0.3	5.0	3.7	5.2	0.0	16.5	4.0	19.3
October-2020	-p 4.6	-p 4.6	p 5.0	p 3.6	p 5.2	p 0.0	p 16.5	p 3.9	p 19.3

p: provisional

Table 9: Manufacturing: Yearly Change Rates for September 2019 - September 2020 (%)
contd.

Year / Month	Manufacture of other non-metallic min. products	Manufacture of non-metallic mineral products n.e.c.	Manufacture of basic metals	Manufacture of basic iron and steel	Manufacture of basic precious and non-ferrous metals	Manufacture of fabricated metal products, ...	Manufacture of structural metal products, tanks, reservoirs ...	Manufacture of other fabricated metal products ...	Manufacture of machinery ... n.e.c.	Manufacture of special-purpose machinery
<i>ISIC</i>	D26	D269	D27	D271	D272	D28	D281	D289	D29	D292
<i>weight</i>	8.20	8.20	5.02	2.02	2.65	3.70	1.55	2.15	0.42	0.42
October-2019	10.0	10.0	7.5	2.2	11.7	8.6	0.4	14.8	24.7	24.7
November-2019	10.1	10.1	7.8	2.3	12.2	10.0	3.3	15.1	24.7	24.7
December-2019	10.3	10.3	8.3	2.4	13.1	9.3	2.9	14.2	24.7	24.7
January-2020	10.1	10.1	7.6	2.3	11.9	9.7	2.9	14.7	24.7	24.7
February-2020	9.9	9.9	6.4	2.0	9.8	9.2	2.9	13.9	24.7	24.7
March-2020	9.9	9.9	5.8	2.0	8.8	9.2	2.9	13.9	24.7	24.7
April-2020	9.9	9.9	2.5	2.2	2.7	9.4	2.9	14.3	24.7	24.7
May-2020	12.7	12.7	3.0	2.3	3.5	9.6	3.1	14.5	24.7	24.7
June-2020	12.1	12.1	2.3	2.2	2.5	7.3	3.1	10.3	0.0	0.0
July-2020	11.0	11.0	2.6	0.5	4.2	6.6	3.1	9.1	0.0	0.0
August-2020	11.0	11.0	4.3	4.6	4.1	2.9	3.1	2.7	0.0	0.0
September-2020	11.1	11.1	4.3	4.7	4.0	3.8	4.5	3.2	0.0	0.0
October-2020	p 11.1	p 11.1	p 4.2	p 4.7	p 3.9	p 3.7	p 4.5	p 3.1	p 0.0	p 0.0

p: provisional

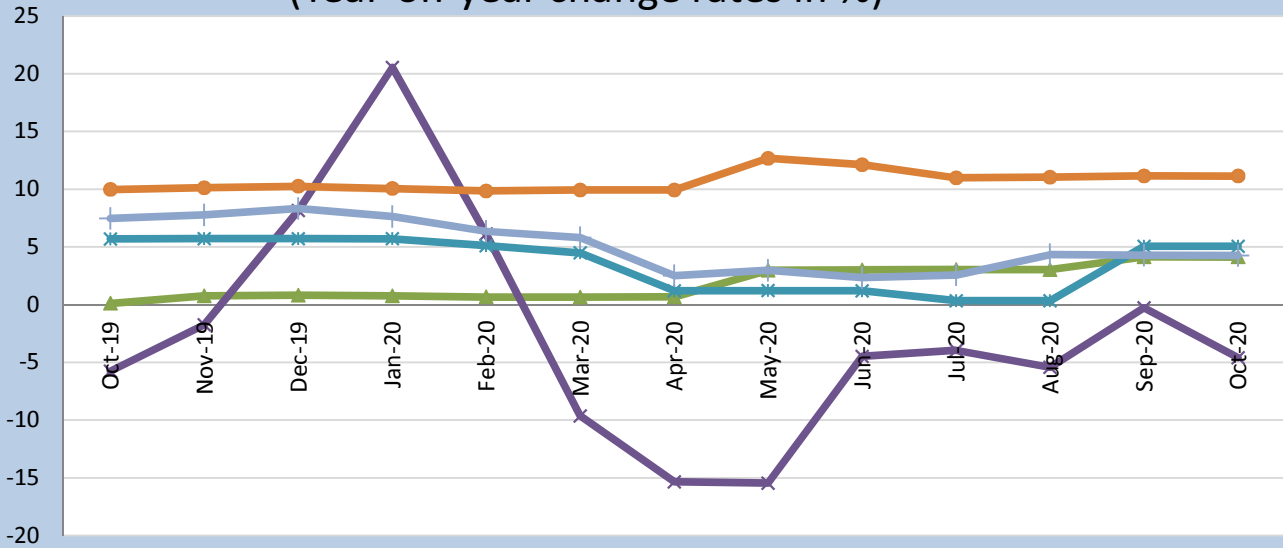
Table 9: Manufacturing: Yearly Change Rates for September 2019 - September 2020 (%)

contd.

Year / Month	Manufacture of electrical machinery and apparatus n.e.c.	Manufacture of insulated wire and cable	Manufacture of motor vehicles, trailers and semi-trailers	Manufacture of bodies for motor vehicles, trailers and semi-trailers	Manufacture of furniture; manufacturing n.e.c.	Manufacture of furniture	Manufacturing n.e.c.
<i>ISIC</i>	<i>D31</i>	<i>D313</i>	<i>D34</i>	<i>D342</i>	<i>D36</i>	<i>D361</i>	<i>D369</i>
<i>weight</i>	0.41	<i>0.41</i>	0.05	<i>0.05</i>	2.44	<i>2.33</i>	<i>0.11</i>
October-2019	0.1	0.1	6.8	6.8	5.7	5.8	1.7
November-2019	0.1	0.1	9.3	9.3	5.7	5.8	1.7
December-2019	3.1	3.1	12.3	12.3	5.7	5.8	0.4
January-2020	3.1	3.1	8.2	8.2	5.5	5.7	0.0
February-2020	3.0	3.0	3.4	3.4	1.8	1.8	0.0
March-2020	3.0	3.0	2.4	2.4	1.5	1.6	0.0
April-2020	3.1	3.1	4.0	4.0	1.4	1.5	0.0
May-2020	3.1	3.1	8.5	8.5	6.7	6.9	0.6
June-2020	3.1	3.1	8.4	8.4	6.7	6.9	0.6
July-2020	3.1	3.1	11.4	11.4	7.2	7.4	0.6
August-2020	3.1	3.1	15.9	15.9	7.1	7.3	0.6
September-2020	3.1	3.1	16.6	16.6	7.7	7.6	11.1
October-2020	p 3.1	p 3.1	p 15.3	p 15.3	p 7.7	p 7.3	p 20.8

p: provisional

PPI Inflation for selected subgroups in the Manufacturing Sector (Year-on-year change rates in %)



—▲ Manufacture of wood and articles of straw etc.
 —× Manufacture of coke, refined petroleum products etc.
 —+ Manufacture of chemicals and chemical products
—● Manufacture of other non-metallic min. products
 —+ Manufacture of basic metals

Ghana Statistical Service (GSS)

Table 10: Manufacturing: Monthly Change Rates for October 2019 - October 2020 (%)

Year / Month	Manufacturing	Manufacture of food products and beverages	Production, processing, preservation of meat, fish, fruit, vegetables, oils and fats	Manufacture of dairy products	Manufacture of grain mill products, starch products, and prepared animal feeds	Manufacture of other food products	Manufacture of beverages	Manufacture of textiles	Spinning, weaving and finishing of textiles
<i>ISIC</i>	<i>D</i>	<i>D15</i>	<i>D151</i>	<i>D152</i>	<i>D153</i>	<i>D154</i>	<i>D155</i>	<i>D17</i>	<i>D171</i>
<i>weight</i>	100	25.64	4.60	4.31	4.66	4.80	7.27	4.27	4.28
October-2019	1.1	0.1	0.6	0.0	0.0	0.2	0.0	0.0	0.0
November-2019	0.5	1.0	5.9	0.0	0.4	0.3	0.0	0.1	0.1
December-2019	1.6	6.6	7.8	18.9	0.0	1.7	0.0	0.2	0.2
January-2020	1.5	0.1	1.0	0.0	0.0	-0.4	0.0	-0.1	-0.1
February-2020	-2.1	-1.0	-6.1	0.0	0.0	-0.8	0.0	-0.2	-0.2
March-2020	-3.0	0.2	1.3	0.0	0.0	0.2	0.0	0.1	0.1
April-2020	0.3	0.6	3.1	0.0	0.0	0.8	0.0	0.4	0.4
May-2020	0.9	1.0	1.8	0.0	0.0	0.5	2.3	0.2	0.2
June-2020	3.4	-0.6	-4.7	0.0	0.6	0.2	0.0	1.0	1.0
July-2020	0.8	0.5	2.5	0.0	0.0	0.1	0.3	4.4	4.4
August-2020	0.2	0.2	1.0	0.0	0.0	0.6	0.0	0.2	0.2
September-2020	0.9	0.8	5.3	0.0	0.0	0.0	0.0	0.0	0.0
October-2020	p 0.1	p 0.1	p 0.3	p 0.0	p 0.0	p 0.1	p 0.0	p -0.0	p -0.0

p: provisional

Table 10: Manufacturing: Monthly Change Rates for October 2019 - October 2020 (%)

contd.

Year / Month	Tanning of leather; manu facture of luggage, etc	Manufacture of footwear	Manufacture of wood an of articles of straw etc.	Sawmilling and planing of wood	Manufacture of products of wood, cork, straw etc.	Manufacture of paper and paper products	Manufacture of paper and paper products	Publishing, printing and reproduction of rec. media	Publishing	Printing and service activities ...
<i>ISIC</i>	D19	<i>D192</i>	D20	<i>D201</i>	<i>D202</i>	D21	<i>D210</i>	D22	<i>D221</i>	<i>D222</i>
<i>weight</i>	0.12	<i>0.12</i>	9.03	<i>4.94</i>	<i>4.10</i>	0.62	<i>0.62</i>	1.14	<i>0.40</i>	<i>0.74</i>
October-2019	0.0	0.0	0.0	0.0	0.0	0.0	0.0	0.0	0.0	0.0
November-2019	2.1	2.1	0.6	0.0	2.5	0.1	0.1	0.0	0.0	0.0
December-2019	0.0	0.0	0.0	0.0	0.2	0.3	0.3	0.0	0.0	0.0
January-2020	0.0	0.0	0.0	0.0	-0.1	-0.2	-0.2	0.0	0.0	0.0
February-2020	0.3	0.3	-0.1	0.0	-0.2	-0.3	-0.3	0.0	0.0	0.0
March-2020	0.0	0.0	0.0	0.0	0.1	0.1	0.1	0.0	0.0	0.0
April-2020	0.0	0.0	0.0	0.0	0.0	0.3	0.3	0.0	0.0	0.0
May-2020	0.7	0.7	2.3	2.1	2.9	0.4	0.4	0.0	0.0	0.0
June-2020	0.0	0.0	0.1	0.0	0.2	0.1	0.1	0.0	0.0	0.0
July-2020	0.0	0.0	0.0	0.0	0.1	0.1	0.1	0.0	0.0	0.0
August-2020	0.0	0.0	0.0	0.0	0.0	0.0	0.0	0.0	0.0	0.0
September-2020	2.5	2.5	1.1	0.0	4.2	0.0	0.0	6.8	0.0	10.7
October-2020	p 0.0	p 0.0	p -0.0	p 0.0	p -0.0	p 3.7	p 3.7	p 0.0	p 0.0	p 0.0

p: provisional

Table 10: Manufacturing: Monthly Change Rates for October 2019 - October 2020 (%)

contd.

Year / Month	Manufacture of coke, refined petroleum products etc.	Manufacture of refined petroleum products	Manufacture of chemicals and chemical products	Manufacture of basic chemicals	Manufacture of other chemical products	Manufacture of man-made fibres	Manufacture of rubber and plastics products	Manufacture of rubber products	Manufacture of plastics products
<i>ISIC</i>	D23	<i>D232</i>	D24	<i>D241</i>	<i>D242</i>	<i>D243</i>	D25	<i>D251</i>	<i>D252</i>
<i>weight</i>	22.94	22.94	10.15	0.54	9.45	0.16	3.90	0.76	3.14
October-2019	4.6	4.6	0.0	0.2	0.0	0.0	0.1	0.2	0.0
November-2019	0.5	0.5	0.0	0.6	0.0	0.0	0.0	-0.2	0.1
December-2019	-1.0	-1.0	0.0	1.4	0.0	0.0	0.4	1.6	0.1
January-2020	6.6	6.6	0.0	-0.7	0.0	0.0	-0.2	-0.7	-0.1
February-2020	-7.4	-7.4	0.0	-1.4	0.0	0.0	-0.4	-1.5	-0.1
March-2020	-12.6	-12.6	0.0	0.4	0.0	0.0	0.2	1.3	0.0
April-2020	0.3	0.3	0.0	1.5	0.0	0.0	0.4	1.7	0.1
May-2020	0.1	0.1	0.0	0.9	0.0	0.0	0.2	1.0	0.1
June-2020	10.7	10.7	0.0	0.3	0.0	0.0	6.0	0.3	7.3
July-2020	0.0	0.0	0.3	0.3	0.3	0.0	9.0	0.3	11.0
August-2020	0.0	0.0	0.0	0.1	0.0	0.0	0.0	0.1	0.0
September-2020	0.0	0.0	4.7	0.0	4.8	0.0	0.0	0.0	0.0
October-2020	p 0.0	p 0.0	p 0.0	p 0.1	p 0.0	p 0.0	p 0.0	p 0.2	p 0.0

p: provisional

Table 10: Manufacturing: Monthly Change Rates for October 2019 - October 2020 (%)

contd.

Year / Month	Manufacture of other non-metallic min. products	Manufacture of non-metallic mineral products n.e.c.	Manufacture of basic metals	Manufacture of basic iron and steel	Manufacture of basic precious and non-ferrous metals	Manufacture of fabricated metal products, ...	Manufacture of structural metal products, tanks, reservoirs ...	Manufacture of other fabricated metal products ...	Manufacture of machinery ... n.e.c.	Manufacture of special-purpose machinery
<i>ISIC</i>	D26	<i>D269</i>	D27	<i>D271</i>	<i>D272</i>	D28	<i>D281</i>	<i>D289</i>	D29	<i>D292</i>
<i>weight</i>	8.20	8.20	5.02	2.02	2.65	3.70	1.55	2.15	0.42	0.42
October-2019	0.0	0.0	0.1	0.0	0.1	0.1	0.0	0.1	0.0	0.0
November-2019	0.1	0.1	0.3	0.1	0.5	1.3	2.9	0.4	0.0	0.0
December-2019	0.2	0.2	0.6	0.1	1.0	0.0	0.0	0.0	0.0	0.0
January-2020	-0.1	-0.1	-0.3	0.0	-0.5	0.4	0.0	0.5	0.0	0.0
February-2020	-0.2	-0.2	-0.6	-0.1	-1.0	0.0	0.0	0.0	0.0	0.0
March-2020	0.1	0.1	0.2	0.1	0.3	0.0	0.0	0.0	0.0	0.0
April-2020	0.0	0.0	0.7	0.2	1.1	0.2	0.0	0.3	0.0	0.0
May-2020	2.4	2.4	0.4	0.1	0.6	0.2	0.3	0.2	0.0	0.0
June-2020	7.5	7.5	0.1	0.0	0.2	0.0	0.0	0.1	0.0	0.0
July-2020	0.7	0.7	0.9	0.0	1.5	0.0	0.0	0.1	0.0	0.0
August-2020	0.0	0.0	1.8	4.1	0.1	0.6	0.0	1.0	0.0	0.0
September-2020	0.1	0.1	0.1	0.1	0.0	0.9	1.4	0.6	0.0	0.0
October-2020	p 0.0	p 0.0	p 0.1	p 0.0	p 0.1	p 0.0	p 0.0	p 0.0	p 0.0	p 0.0

p: provisional

Table 10: Manufacturing: Monthly Change Rates for October 2019 - October 2020 (%)

contd.

Year / Month	Manufacture of electrical machinery and apparatus n.e.c.	Manufacture of insulated wire and cable	Manufacture of motor vehicles, trailers and semi-trailers	Manufacture of bodies for motor vehicles, trailers and semi-trailers	Manufacture of furniture; manufacturing n.e.c.	Manufacture of furniture	Manufacturing n.e.c.
<i>ISIC</i>	D31	<i>D313</i>	D34	<i>D342</i>	D36	<i>D361</i>	<i>D369</i>
<i>weight</i>	0.41	<i>0.41</i>	0.05	<i>0.05</i>	2.44	<i>2.33</i>	<i>0.11</i>
October-2019	0.0	0.0	0.6	0.6	0.0	0.0	0.0
November-2019	0.0	0.0	1.2	1.2	0.0	0.0	0.0
December-2019	3.0	3.0	3.4	3.4	0.0	0.0	0.0
January-2020	0.0	0.0	-1.8	-1.8	1.4	1.5	0.0
February-2020	0.0	0.0	-2.7	-2.7	0.0	0.0	0.0
March-2020	0.0	0.0	1.9	1.9	0.0	0.0	0.0
April-2020	0.0	0.0	-0.9	-0.9	0.0	0.0	0.0
May-2020	0.0	0.0	4.3	4.3	5.2	5.4	0.6
June-2020	0.0	0.0	3.4	3.4	0.0	0.0	0.0
July-2020	0.0	0.0	2.3	2.3	0.4	0.4	0.0
August-2020	0.0	0.0	3.5	3.5	0.0	0.0	0.0
September-2020	0.0	0.0	0.4	0.4	0.5	0.2	10.4
October-2020	p 0.0	p 0.0	p -0.6	p -0.6	p 0.0	p -0.2	p 8.8

p: provisional

Table 11: Utilities: Producer Price Index (Sept 2006=100) for October 2019 - October 2020

Year / Month	Electricity and water supply (Utilities)	Electricity supply	Production, transmission and distribution of electricity	Water supply	Collection, purification and distribution of water
<i>ISIC</i>	<i>E</i>	<i>E40</i>	<i>E401</i>	<i>E41</i>	<i>E410</i>
<i>weight</i>	100.00	93.25	93.25	6.75	6.75
October-2019	896.0	894.2	894.2	921.2	921.2
November-2019	896.5	894.8	894.8	921.2	921.2
December-2019	897.7	896.1	896.1	921.2	921.2
January-2020	897.2	895.5	895.5	921.2	921.2
February-2020	895.9	894.2	894.2	921.2	921.2
March-2020	896.2	894.5	894.5	921.2	921.2
April-2020	897.6	895.9	895.9	921.2	921.2
May-2020	898.3	896.7	896.7	921.2	921.2
June-2020	898.6	897.0	897.0	921.2	921.2
July-2020	898.8	897.3	897.3	921.2	921.2
August-2020	898.9	897.3	897.3	921.2	921.2
September-2020	898.9	897.4	897.4	921.2	921.2
October-2020	p 899.1	p 897.5	p 897.5	p 921.2	p 921.2

p: provisional

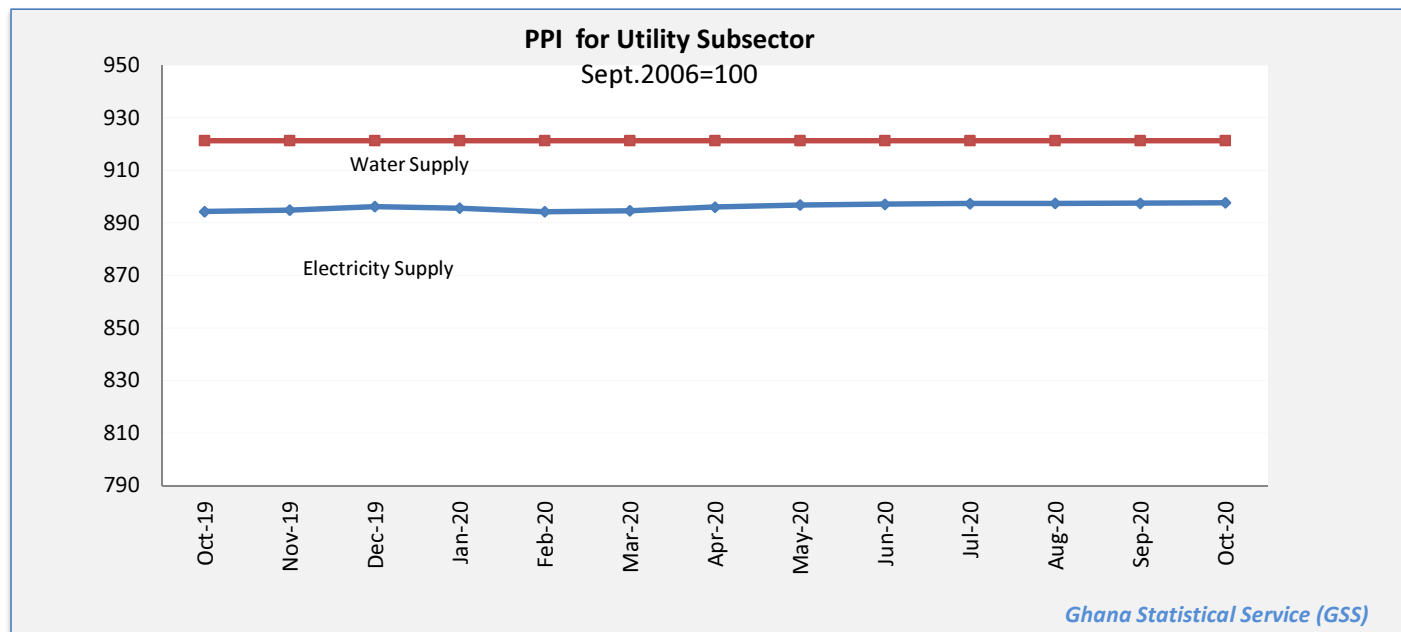


Table 12: Utilities: Yearly Change Rates for October 2019 - October 2020 (%)

Year / Month	Electricity and water supply (Utilities)	Electricity supply	Production, transmission and distribution of electricity	Water supply	Collection, purification and distribution of water
<i>ISIC</i>	<i>E</i>	<i>E40</i>	<i>E401</i>	<i>E41</i>	<i>E410</i>
<i>weight</i>	100.00	93.25	93.25	6.75	6.75
October-2019	12.6	12.7	12.7	10.4	10.4
November-2019	12.6	12.8	12.8	10.4	10.4
December-2019	12.7	12.9	12.9	10.4	10.4
January-2020	12.6	12.7	12.7	10.4	10.4
February-2020	12.3	12.4	12.4	10.4	10.4
March-2020	12.2	12.3	12.3	10.4	10.4
April-2020	12.1	12.2	12.2	10.4	10.4
May-2020	12.1	12.2	12.2	10.4	10.4
June-2020	12.0	12.1	12.1	10.4	10.4
July-2020	5.8	6.0	6.0	2.2	2.2
August-2020	5.8	6.0	6.0	2.2	2.2
September-2020	5.8	6.0	6.0	2.2	2.2
October-2020	p 0.3	p 0.4	p 0.4	p 0.0	p 0.0

p: provisional

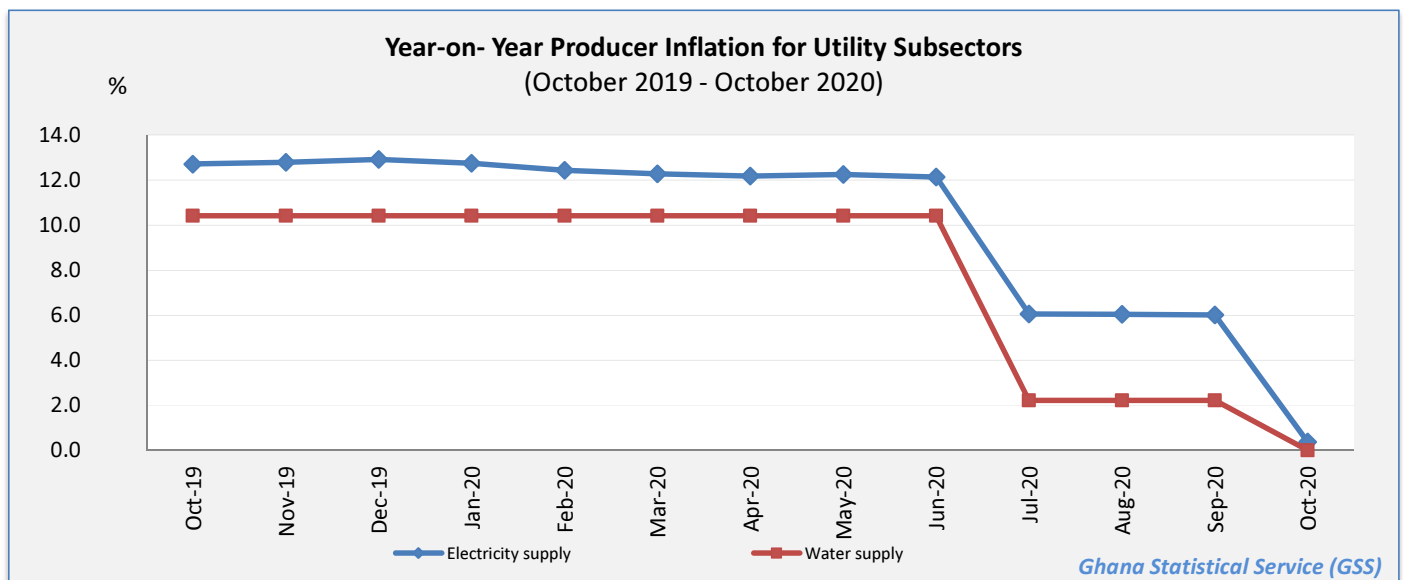


Table 13: Utilities: Monthly Change Rates for October 2019 - October 2020 (%)

Year / Month	Electricity and water supply (Utilities)	Electricity supply	Production, transmission and distribution of electricity	Water supply	Collection, purification and distribution of water
<i>ISIC</i>	<i>E</i>	<i>E40</i>	<i>E401</i>	<i>E41</i>	<i>E410</i>
<i>weight</i>	100.00	93.25	93.25	6.75	6.75
October-2019	5.4	5.6	5.6	2.2	2.2
November-2019	0.1	0.1	0.1	0.0	0.0
December-2019	0.1	0.1	0.1	0.0	0.0
January-2020	-0.1	-0.1	-0.1	0.0	0.0
February-2020	-0.1	-0.1	-0.1	0.0	0.0
March-2020	0.0	0.0	0.0	0.0	0.0
April-2020	0.1	0.2	0.2	0.0	0.0
May-2020	0.1	0.1	0.1	0.0	0.0
June-2020	0.0	0.0	0.0	0.0	0.0
July-2020	0.0	0.0	0.0	0.0	0.0
August-2020	0.0	0.0	0.0	0.0	0.0
September-2020	0.0	0.0	0.0	0.0	0.0
October-2020	p 0.0	p 0.0	p 0.0	p 0.0	p 0.0

p: provisional

